

**Introduction**

The CFL-512 has been developed to measure intra-ventricular volume using dual field excitation. However, in some cases it is desirable to measure volume using only a single field. To facilitate this CD Leycom now produces a series of special volume connection cables to adapt the CFL-512 for use with single field volume/pressure catheters or to convert dual field catheters to single field.

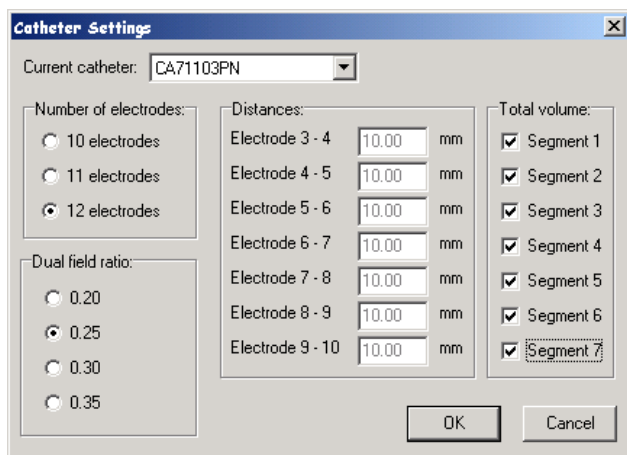
**When is a Single Field used?**

Use of a single field to measure intra-ventricular volume creates a smaller and weaker electrical field, which may diminish the possibility of measuring volume fluctuations in other chambers, the opposite ventricle for example.

**Important notice**

To adapt the CFL-512 to single field excitation requires a special single field volume connection cable, depending on the catheter to be used. Each of these cables adapts the dual field excitation to single field for a specific type of catheter.

**Note:** When using single field adaptation cables the number of electrodes in 'Catheter Settings' must always be set to 12.

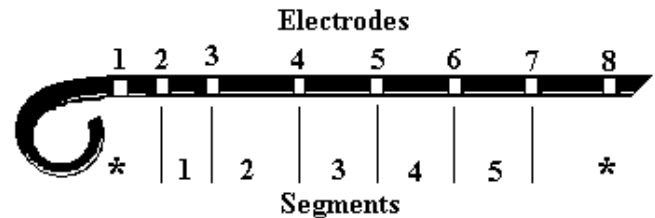


**Note:** When using single field, dual field ratio has no influence on the result.

(Adaptation to single field of other catheters than those mentioned on this sheet requires a specially made custom adaptation cable. Contact CD Leycom for details.)

**Single Field**

**using 8-electrode DF catheter**



8-electrode catheter

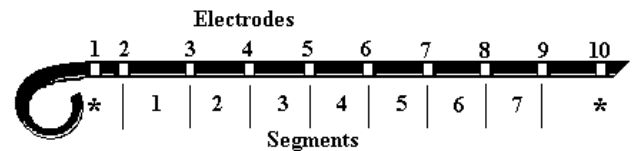
(\* Indicates electrodes used to set up electric field)

The **CCBL-BB8-1.5M** is for use with Numed 8 electrode, SF, catheters. The **CCBL-BR8-1.5M** is for use with Millar 8 electrode, SF, catheters.

**Note:** When using 8 electrode SF catheters segments 6 and 7 should be excluded in 'Catheter Settings' as these are non-active segments in this configuration.

**Single Field**

**using 10- or 12-electrode DF catheters**



10-electrode catheter

(\* Indicates electrodes used to set up electric field)

The **CCBL-BBS-1.5M** adapts CD Leycom or Numed 10 and 12 electrode, DF, catheters to single field excitation volume measurement; the **CCBL-BRS-1.5M** is for use with 10 and 12 electrode, DF, Millar catheters.

**Note:** Using a 12-electrode catheter, electrode 11 and 12 on the catheter will not be used.



If you have any questions or comments, please contact us  
 by phone +31-79 -360 1780  
 by fax +31-79 -362 1743  
 or by E-mail [support@cdleycom.com](mailto:support@cdleycom.com)  
 or through our website at [www.cdleycom.com](http://www.cdleycom.com)

Our address is: CD Leycom  
 Argonstraat 116  
 2718 SP Zoetermeer  
 The Netherlands